



Minalto - Apartment 4

Church street, St.Mary's

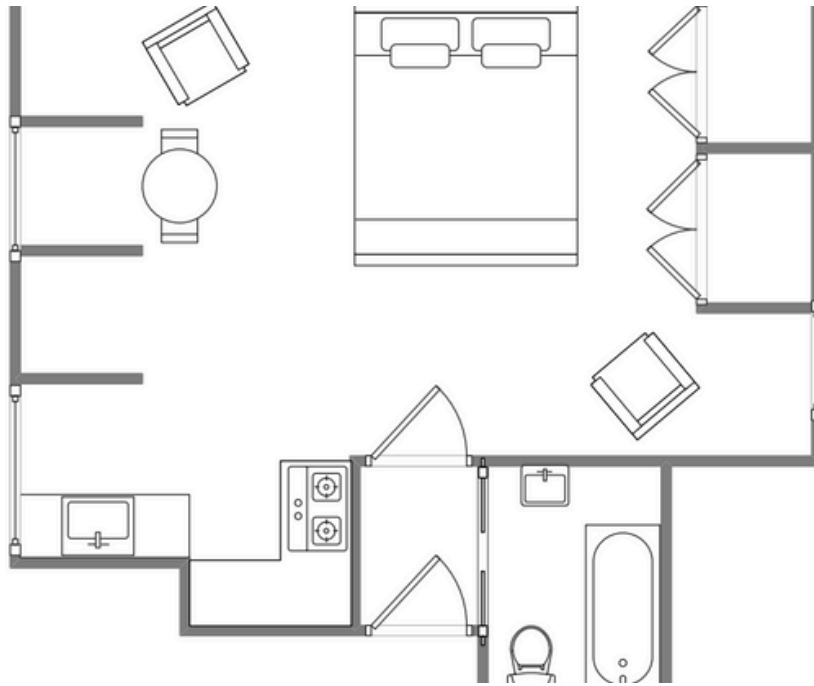


Sleeps 2 | Friday Change over

- Double arrangement
- Bath and shower
- Laundry Facilities
- Close to town centre
- Internet access
- Convenient for beaches

This striking three-storey Victorian town house forms part of a granite terrace built from money recovered from the wreck of the SS Schiller, one of the largest ocean liners of her time. Minalto has been converted into four high quality apartments. This second floor studio apartment benefits from views to the harbour from the front and the Garrison to the rear and comfortably sleeps two in a double bed in the large dual aspect living area. The apartment also contains a well-equipped kitchenette and a modern bathroom with shower over the bath and heated towel rail. Situated a mere five-minute level walk from the heart of Hugh Town, Minalto is also convenient for local beaches and the quay.

Layout



Getting to the property

Map of St Marys



Directions from the Quay | Walking time: 6-10 minutes

Head towards the entrance to the quay
Turn left at The Mermaid Inn on to Hugh Street Keep to the left side of the road
Continue along Hugh Street to Bordeaux shop

Cross the road to the Town Hall Walk straight ahead on to Church Street Minalto is about 100 yards on the right Apartment 1 entrance is on the ground floor

What3words:creamed.lamppost.unclaimed

Scilly Self Catering
Lower Strand
Isles of Scilly, TR21 0PS

Enquiries@scillyselfcatering.com
01720 422082
www.scillyselfcatering.com